

TOP SPIRE 1-L

P/N: 5070

THE TOP SPIRE

is designed as an extension kit for towers and masts and is suitable to install 3 panel antennas up to 2,3 meters. Versions for 2,6 meters are available on request.

FLEXIBILITY

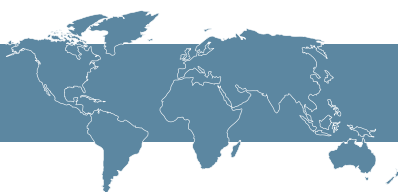
The Top Spire can be installed on top of towers and masts with all common frame leg designs, round, square, angular, etc. thanks to the CUE DEE clamp.

QUALITY

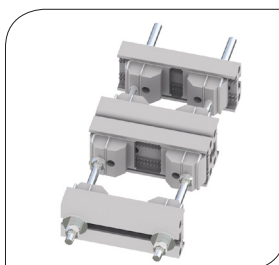
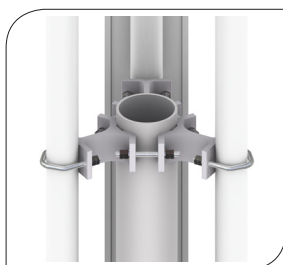
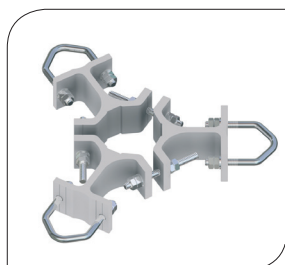
All components are made of anodized aluminium and stainless steel which gives the Top Spire excellent corrosion resistance.

EASY ASSEMBLY

The choice of materials makes the product very light which makes the handling and installation very easy.



Quality Design



TECHNICAL INFORMATION

TOP SPIRE 1-L

ORDERING P/N

5070

FUNCTION DESCRIPTION

An extension kit for towers and masts with space for three mounting tubes.
Typical for installations of panel antennas up to 2,3 m.

CLAMP MOUNTING RANGE

Minimum: (mm)
(in)

Maximum: (mm)
(in)

TUBES

Ø25
(Ø1,0)

Ø120
(Ø4,7)

SQUARE PROFILES

30 x 30
(1,2 x 1,2)

90 x 90
(3,5 x 3,5)

90° ANGLE

35 x 35
(1,4 x 1,4)

90 x 90
(3,5 x 3,5)

60° ANGLE

35 mm opening
(1,4 in opening)

60 mm opening
(2,4 in opening)

MECHANICAL DATA

Centre tube:

D=Ø114 mm (4,5 in), t=5 mm (0,20 in), L=3000 mm (120 in)

Mounting tubes:

D=Ø60 mm (2,4 in), t=3 mm (0,12 in), L=2500 mm (100 in)

Distance between clamps:

Minimum 1300 mm (50 in)

Tubes:

Aluminium, Nature anodized 20µm

Clamp profiles:

Aluminium, Nature anodized 20µm

Antenna support profiles:

Aluminium, Nature anodized 20µm

Fasteners:

Acid proof stainless steel

PERFORMANCE

WIND SPEED

km/h	m/s	mph
200	55	124
150	42	93

MAX WIND AREA

m ²	ft ²
0,9	10
1,6	17

PACKAGE DIMENSIONS

LENGTH

3000 mm
(120 in)

WIDTH

500 mm
(20 in)

HEIGHT

300 mm
(12 in)

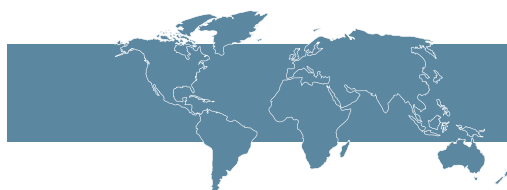
WEIGHT

45 kg
(100 lb)

The verification is carried out in accordance with relevant parts of:

- EN 755-9:2008 Aluminium and aluminium alloys-Extruded rod/bars, tube and profiles
- EN 1999-1-1:2007 Eurocode 9: Design of aluminium structures – Part 1-1: General structural rules
- EN 1999-1-3:2007 Eurocode 9: Design of aluminium structures – Part 1-3: Structures susceptible to fatigue
- EN 1991-1-4:2005 Eurocode 1: Actions on structures – Part 1-4: General actions – Wind action

Compliance to ROHS 2 directives 2011/65/EU



Quality Design