

SINGLE AND DOUBLE RRH MOUNT

P/N: 7351

THE SINGLE AND DOUBLE RRH MOUNT

is designed to hold two RRH units on the same bracket. The Single and Double RRH mount provides flexibility and "all in one" installation capability.

FLEXIBILITY

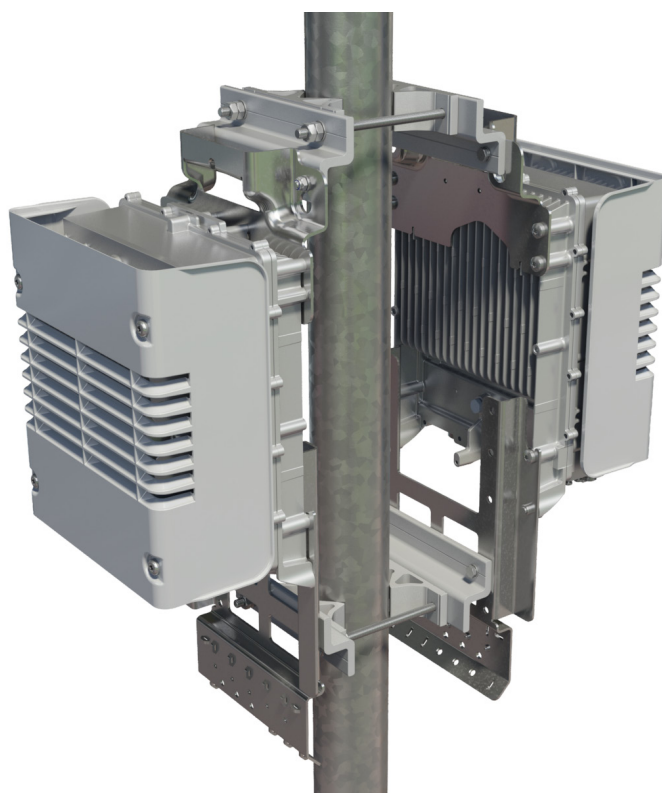
It is possible to install the Single and Double RRH Mount on any tube - round or square - with a dimension between 60 and 120 mm (2,4 and 4,7 in).

QUALITY

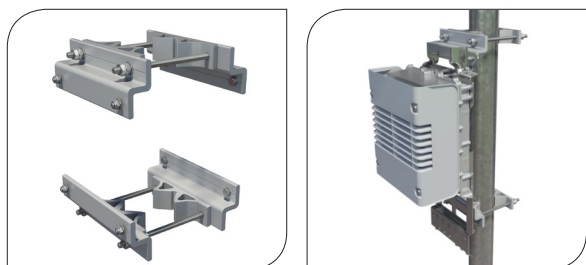
All components are made of anodized aluminium and acid proof stainless steel which gives the support excellent corrosion resistance.

EASY ASSEMBLY

The choice of materials makes the product very light which makes the handling and installation very easy and effective.



Quality Design



TECHNICAL INFORMATION

SINGLE AND DOUBLE RRH MOUNT

ORDERING P/N	FUNCTION DESCRIPTION			
7351	A pole mounting bracket kit for installation of one or two RRH units (RRH units are not included).			
MOUNTING RANGE	TUBES	SQUARE PROFILES		
Minimum: (mm) (inch)	Ø60 (2,4)	60 x 60 (2,4 x 2,4)		
Maximum: (mm) (inch)	Ø120 (4,7)	90 x 90 (3,5 x 3,5)		
MECHANICAL DATA	Profiles Fasteners			
	Aluminium, Nature anodized 20µm Acid proof stainless steel			
PACKAGE DIMENSIONS	LENGTH	WIDTH	HEIGHT	WEIGHT
	290 mm (11,4 in)	124 mm (4,9 in)	122 mm (4,8 in)	4,6 Kg (10,14 lb)

The verification is carried out in accordance with relevant parts of:

- EN 755-9:2008 Aluminium and aluminium alloys-Extruded rod/bars, tube and profiles
- EN 1999-1-1:2007 Eurocode 9: Design of aluminium structures – Part 1-1: General structural rules
- EN 1999-1-3:2007 Eurocode9: Design of aluminium structures – Part 1-3: Structures susceptible to fatigue
- EN 1991-1-4:2005 Eurocode1: Actions on structures – Part 1-4: General actions – Wind action

Compliance to ROHS 2 directives 2011/65/EU



Quality Design