

TOP SPIRE 2-L

P/N: 5215

THE TOP SPIRE 2-L

is designed as an extension kit for towers and masts and is suitable to install 3 panel antennas up to 2,3 meter. *(Other versions are available upon request).*

The centre aluminium pole Ø120 mm is 4,8 meter long and equipped with split supports to carry the included Ø60 mm mounting tubes.

FLEXIBILITY

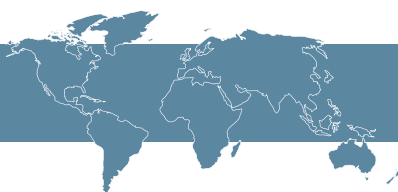
The support has 1,5 meter alubra bars in two levels to distribute the load on two frame legs. The support can be installed on top of towers and masts with all common frame leg designs, round, square, angle etc, thanks to the CUE DEE clamp.

QUALITY

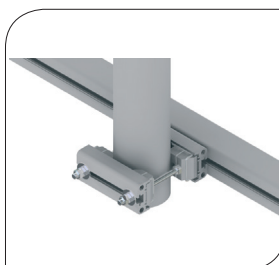
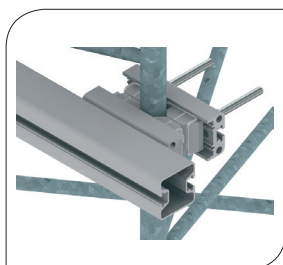
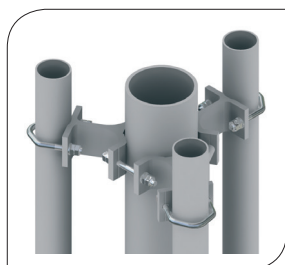
All components are made of anodized aluminium and stainless steel which gives the support excellent corrosion resistance.

EASY ASSEMBLY

The choice of materials makes the product very light which in turn makes the handling and installation very easy.



Quality Design



TECHNICAL INFORMATION

TOP SPIRE 2-L

ORDERING P/N	FUNCTION DESCRIPTION
5215	Top Spire support kit in two levels with alubra bars which distribute the load on frame legs. For installation of three panel antennas up to 2,3 m.

CLAMP MOUNTING RANGE	TUBES	SQUARE PROFILES	90° ANGLE	60° ANGLE
Minimum: (mm) (in)	Ø25 (Ø1,0)	30 x 30 (1,2 x 1,2)	35 x 35 (1,4 x 1,4)	35 mm opening (1,4 in opening)
Maximum: (mm) (in)	Ø120 (Ø4,7)	90 x 90 (3,5 x 3,5)	90 x 90 (3,5 x 3,5)	60 mm opening (2,4 in opening)

MECHANICAL DATA

Centre tube:	D=Ø120 mm (4,7 in), t=6 mm (0,24 in), L=4800 mm (190 in)
Mounting tubes:	D=Ø60 mm (2,4 in), t=3 mm (0,12 in), L=2300 mm (90 in)
Distance between clamps:	Minimum 1300 mm (50 in)
Tubes:	Aluminium, Nature anodized 20µm
Clamp profiles:	Aluminium, Nature anodized 20µm
Antenna support profiles:	Aluminium, Nature anodized 20µm
Fasteners:	Acid proof stainless steel

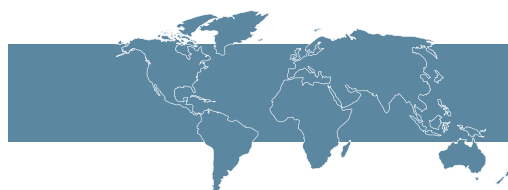
PERFORMANCE	WIND SPEED			MAX WIND AREA	
	km/h	m/s	mph	m ²	ft ²
	200	55	124	0,9	10
	150	42	93	1,6	17

PACKAGE DIMENSIONS	LENGTH	WIDTH	HEIGHT	WEIGHT
	4800 mm (189 in)	300 mm (12 in)	300 mm (12 in)	71 kg (157 lb)

The verification is carried out in accordance with relevant parts of:

- EN 755-9:2008 Aluminium and aluminium alloys-Extruded rod/bars, tube and profiles
- EN 1999-1-1:2007 Eurocode 9: Design of aluminium structures – Part 1-1: General structural rules
- EN 1999-1-3:2007 Eurocode 9: Design of aluminium structures – Part 1-3: Structures susceptible to fatigue
- EN 1991-1-4:2005 Eurocode 1: Actions on structures – Part 1-4: General actions – Wind action

Compliance to ROHS 2 directives 2011/65/EU



Quality Design