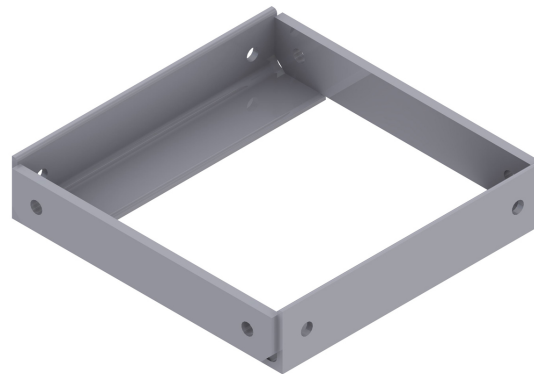


Ballast Box Light

P/N: 10186



The Ballast Box Heavy is used in CueDee's Ballast Solutions (samples found under our Solutions tab <https://cuedee.com/solutions>). Note that there is a light version of the ballast box as well found under product 10186. For detail strength calculation please contact CueDee for further discussions.

FLEXIBILITY

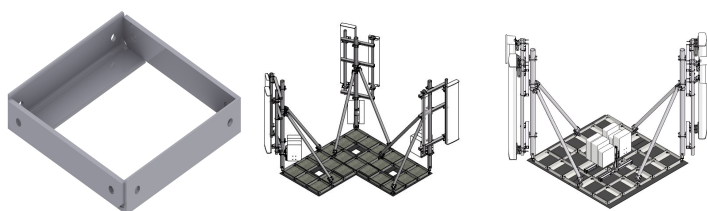
CueDee's ballast solutions are designed with footprint, height, location, and wind pressure in mind. Number of variants can be formed utilizing four by four to six by six bases one can create numerous mutations all based on your specific needs.

QUALITY

All components are made of Hot Dip Galvanized Steel.

AVAILABILITY

Stocked item. Ships in 5 days.



PACKAGING

Pallet holds 40 boxes. Pallet ballast weight 552 kg.

MOUNTING

Mounts with M20 size nut and bolt.

MECHANICAL DATA

Tolerances: General tolerances: ISO 2768-1c unless stated otherwise.

Flat and Angle Bars: Minimum grade S235JR according to EN 10025-2.

Welding: ISO 5817-C. ISO 8501-3 - Preparation grade P2.

Surface Treatment: Hot Dip Galvanized according to ISO 1461.

SIZE AND WEIGHT

Weight	13.8 kg
Size (w*d*h)	500 mm by 500 mm by 100 mm

ASSOCIATED PARTS

10333
1740

RRU Butler Light
Ballast Box Heavy