

MOUNTING TUBES

The Mounting tubes can be used as a support for panel antennas, small radio links or other common telecom equipment. And also as an extension of existing tubes.

QUALITY

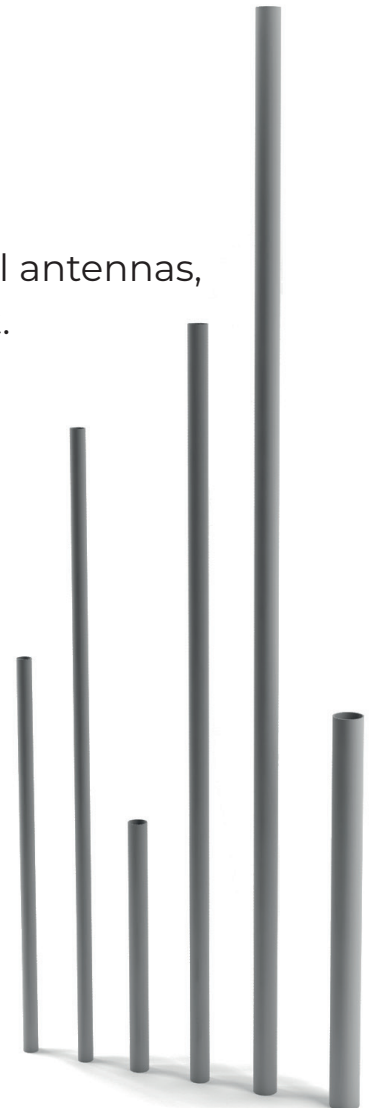
The mounting tubes are made of age hardened anodized aluminium which gives the tubes excellent corrosion resistance and strength.

EASY ASSEMBLY

The choice of material makes the product very light which makes the handling and installation very easy.

FLEXIBILITY

Mounting tubes are available in diameters between $\text{Ø}40$ mm and $\text{Ø}114$ mm at custom lengths up to 6000 mm.



TECHNICAL INFORMATION

MOUNTING TUBES

IDENTIFICATION:	MOUNTING TUBE:	TYPICAL APPLICATION:	Ø mm	t mm	WEIGHT: kg/m
CD 7040	Ø40 x 3, Aluminium	Small antennas and telecom equipment	40	3	0,94
CD 7041	Ø40 x 5, Aluminium	Small antennas and telecom equipment	40	5	1,48
CD 7050	Ø50 x 3, Aluminium	Small antennas and telecom equipment	50	3	1,20
CD 7051	Ø50 x 5, Aluminium	Small antennas and telecom equipment	50	5	1,91
CD 7060	Ø60 x 3, Aluminium	Small antennas and telecom equipment	60	3	1,45
CD 7075	Ø75 x 3,5, Aluminium	Panel antennas, small radio links etc.	75	3,5	2,12
CD 7076	Ø75 x 5, Aluminium	Panel antennas, small radio links etc.	75	5	2,97
CD 7090	Ø90 x 5, Aluminium	Panel antennas, radio links etc.	90	5	3,61
CD 7114	Ø114 x 5, Aluminium	Panel antennas, radio links etc.	114	5	4,62
CD 7120	Ø120 x 6, Aluminium	Aluminium pole	120	6	5,80
CD 7150	Ø150 x 5, Aluminium	Aluminium pole	150	5	6,15
CD 7200	Ø202 x 4, Aluminium	Aluminium pole	202	4	8,92

P/N:	TUBE: (mm)	LENGTH: (m)	P/N:	TUBE: (mm)	LENGTH: (m)	P/N:	TUBE: (mm)	LENGTH: (m)
5672	Ø40 x 3	1	5705	Ø50 x 5	1	2108	Ø75 x 5	1
5673	Ø40 x 3	1,5	5706	Ø50 x 5	1,5	5594	Ø75 x 5	1,5
5674	Ø40 x 3	2	5707	Ø50 x 5	2	2220	Ø75 x 5	2
5675	Ø40 x 3	2,5	5708	Ø50 x 5	2,5	5595	Ø75 x 5	2,5
5676	Ø40 x 3	3	5709	Ø50 x 5	3	1994	Ø75 x 5	3
5677	Ø40 x 3	3,5	5710	Ø50 x 5	3,5	5725	Ø75 x 5	3,5
5678	Ø40 x 3	4	5711	Ø50 x 5	4	1218	Ø75 x 5	4
5679	Ø40 x 3	4,5	5712	Ø50 x 5	4,5	5726	Ø75 x 5	4,5
5680	Ø40 x 3	5	5713	Ø50 x 5	5	5727	Ø75 x 5	5
5681	Ø40 x 3	5,5	5714	Ø50 x 5	5,5	5728	Ø75 x 5	5,5
5682	Ø40 x 3	6	5715	Ø50 x 5	6	5729	Ø75 x 5	6
5683	Ø40 x 5	1	2002	Ø60 x 3	1	3011	Ø90 x 5	1
5684	Ø40 x 5	1,5	1949	Ø60 x 3	1,5	2006	Ø90 x 5	1,5
5685	Ø40 x 5	2	1948	Ø60 x 3	2	2007	Ø90 x 5	2
5686	Ø40 x 5	2,5	1967	Ø60 x 3	2,5	2008	Ø90 x 5	2,5
5687	Ø40 x 5	3	2003	Ø60 x 3	3	2009	Ø90 x 5	3
5688	Ø40 x 5	3,5	5716	Ø60 x 3	3,5	3540	Ø90 x 5	3,5
5689	Ø40 x 5	4	5717	Ø60 x 3	4	2410	Ø90 x 5	4
5690	Ø40 x 5	4,5	5718	Ø60 x 3	4,5	3847	Ø90 x 5	4,5
5691	Ø40 x 5	5	5719	Ø60 x 3	5	5730	Ø90 x 5	5
5692	Ø40 x 5	5,5	5720	Ø60 x 3	5,5	5731	Ø90 x 5	5,5
5693	Ø40 x 5	6	5721	Ø60 x 3	6	3952	Ø90 x 5	6
5694	Ø50 x 3	1	2004	Ø75 x 3,5	1	5732	Ø114 x 5	1
5695	Ø50 x 3	1,5	1956	Ø75 x 3,5	1,5	2041	Ø114 x 5	1,5
5696	Ø50 x 3	2	1950	Ø75 x 3,5	2	2096	Ø114 x 5	2
5697	Ø50 x 3	2,5	1958	Ø75 x 3,5	2,5	1978	Ø114 x 5	2,5
5698	Ø50 x 3	3	1919	Ø75 x 3,5	3	1959	Ø114 x 5	3
5699	Ø50 x 3	3,5	3309	Ø75 x 3,5	3,5	5733	Ø114 x 5	3,5
5700	Ø50 x 3	4	1920	Ø75 x 3,5	4	1922	Ø114 x 5	4
5701	Ø50 x 3	4,5	5722	Ø75 x 3,5	4,5	5734	Ø114 x 5	4,5
5702	Ø50 x 3	5	5723	Ø75 x 3,5	5	2411	Ø114 x 5	5
5703	Ø50 x 3	5,5	5724	Ø75 x 3,5	5,5	5735	Ø114 x 5	5,5
5704	Ø50 x 3	6	4585	Ø75 x 3,5	6	1921	Ø114 x 5	6