

1-L LINK SUPPORT

P/N: 1981

The 1-L Link Support is designed for installation of several small radio links or one large linkup to Ø3,0 meters (10 ft) with strut support. The 1-L link support can be installed on masts as well as conical towers.

FLEXIBILITY

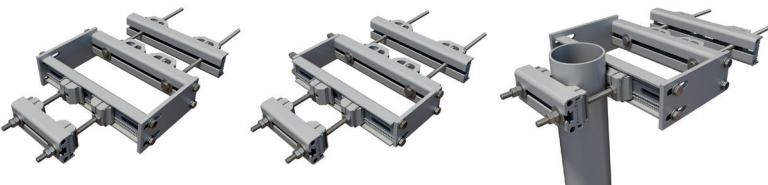
The 1-Leg link support can handle a wide range of all common frame leg designs, round, square, angular etc. thanks to the flexibility of the Cue Dee clamp 270. The oblong holes on the upper plates allow the support to compensate for inclined towers.

QUALITY

All components are made of anodized aluminium and stainless steel which gives the support excellent corrosion resistance.

EASY ASSEMBLY

The choice of materials makes the product very light which makes the handling and installation very easy. makes the handling and installation very easy.



FUNCTION DESCRIPTION

Clamp kit in two levels, with space for one mounting tube. Typical for installation of large radio links or several small ones or other common telecom equipment. (Mounting tube not included)

MECHANICAL DATA

Clamp profiles Aluminium, Nature anodized 20µm
Plates Aluminium, Nature anodized 20µm
Fasteners Acid proof stainless steel

TOWER - TILT COMPENSATION

Installation type	Angle
500 mm (20 in) between supports	6°
1000 mm (40 in) between supports	3°

CLAMP MOUNTING RANGE

Frame	Min (in)	Max (in)
Tubes	Ø25 mm (Ø1,0 in)	Ø270 mm (Ø10,6 in)
Square profiles	60 x 60 mm (2,4 x 2,4 in)	210 x 210 mm (8,3 x 8,3 in)
90° Angle	60 x 60 mm (2,4 x 2,4 in)	220 x 220 mm (8,7 x 8,7 in)
60° Angle	65 mm opening (2,6 in opening)	310 mm opening (12,3 in opening)

PACKAGE DIMENSIONS

Length	Width	Height	Weight
540 mm	175 mm	180 mm	23 kg

ACCESSORIES

Identification	Ø mm (in)	t mm (in)	Typical Application
7090	90 (3,5)	5 (0,20)	1-4 radio links, Ø0,3-0,6 m (Ø12-24 in)
7114	114 (4,5)	5 (0,20)	Radio link Ø1,2-3,0 m (Ø47-118 in)