



2-L LINK SUPPORT

P/N: 1913

The 2-L Link Support is designed for installation of several small radio links or one large link up to Ø2,6 meters with strut support.

FLEXIBILITY

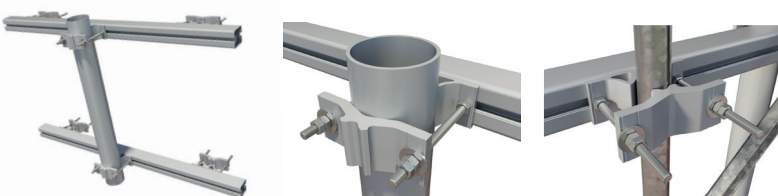
The 2-L Link Support can handle a wide range of all common frame leg designs, round, square, angular etc. thanks to the flexibility of the CUE DEE Small Clamp. The clamp can slide in the grooves on the side of the ALUBRA beams. This makes it possible for the support to fit frame leg distances up to 1300 mm.

QUALITY

All components are made of anodized aluminium and stainless steel which gives the support excellent corrosion resistance.

EASY ASSEMBLY

The choice of materials makes the product very light which makes the handling and installation very easy.



FUNCTION DESCRIPTION

A two level support with adjustable clamps for all common frame leg designs. Horizontal beams with grooves to cover different distances between frame legs, up to 1300 mm. The product contains 2 alubra beams L= 1.5m, 1 aluminum tube 114x5mm L=1m and 6 small clamps.

MECHANICAL DATA

Clamp profiles: Aluminium, Nature anodized 20µm
Beams: Aluminium, Nature anodized 20µm
Tube: Aluminium, Nature anodized 20µm
Fasteners : Acid proof stainless steel

CLAMP MOUNTING RANGE

Frame	Min (in)	Max (in)
Tubes	Ø25 mm (Ø1,0 in)	Ø120 mm (Ø4,7 in)
Square profiles	35 x 35 mm (1,4 x 1,4 in)	90 x 90 mm (3,5 x 3,5 in)
90° Angle	35 x 35 mm (1,4 x 1,4 in)	90 x 90 mm (3,5 x 3,5 in)
60° Angle	40 mm opening (1,6 in opening)	100 mm opening (4,0 in opening)

PACKAGE DIMENSIONS

	Length	Width	Height	Weight
Package 1: Beams and Tubes	540 mm (59 in)	175 mm (5,9 in)	180 mm (7,5 in)	23 kg (32 lb)
Package 2: Clamps	285 mm (11 in)	150 mm (5,9 in)	190 mm (7,5 in)	8,9 kg (20 lb)