

CLAMP 270

P/N: 8973

Clamp 270 is a unique clamp that will solve most of the fitting challenges on the market. Together with ALUBRA extrusions and Z-profiles it is possible to build almost any kind of support structure.

FLEXIBILITY

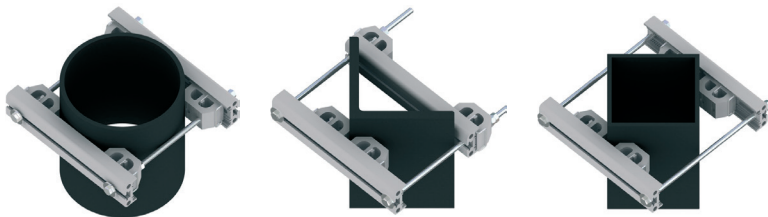
The clamp can handle a wide range of all common frame leg designs, round, square, angle, etc.

QUALITY

All components are made of anodized aluminium and stainless steel which gives the clamp excellent corrosion resistance.

EASY ASSEMBLY

The choice of materials makes the product very light which makes the handling and installation very easy.



FUNCTION DESCRIPTION

Universal clamp with possibility of clamping a wide range of all common frame legs, round, square, angle etc. Preferably used in combination with ALUBRA beams or Z-profiles. Typical for installation of panel antennas, radio links or other common telecom equipment.

MECHANICAL DATA

Clamp profiles: Aluminium, nature anodized 20µm
Fasteners : Acid proof stainless steel

CLAMP MOUNTING RANGE

Frame Tubes	Min (in) Ø25 mm (Ø1,0 in)	Max (in) Ø270 mm (Ø10,6 in)
Square profiles	60 x 60 mm (2,4 x 2,4 in)	200 x 200 mm (7,9 x 7,9 in)
90° Angle	60 x 60 mm (2,4 x 2,4 in)	220 x 220 mm (8,7 x 8,7 in)
60° Angle	65 mm opening (2,6 in in opening)	310 mm opening (12,2 in opening)

PRODUCT DIMENSIONS

Length	Width	Height	Weight
362 mm (14,3 in)	400 mm (15,7 in)	75 mm (2,95 in)	5,5 kg (12,1 lb)