

CLAMP 120

P/N: 8971

Clamp 120 is a unique clamp that will solve most of the fitting challenges on the market. Together with ALUBRA extrusions, Z-profiles or wall supports it is possible to build almost any kind of support structure.

FLEXIBILITY

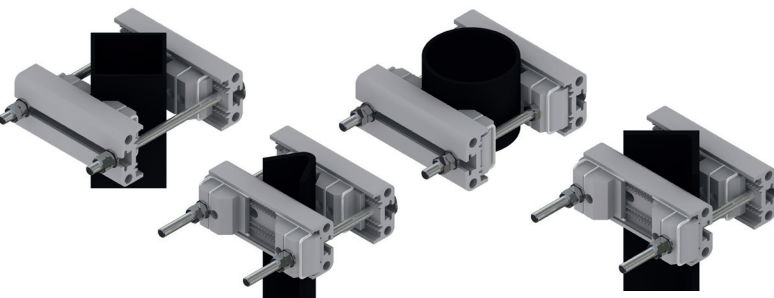
The clamp can handle a wide range of all common frame leg designs, round, square, angle, etc.

QUALITY

All components are made of anodized aluminium and stainless steel which gives the clamp excellent corrosion resistance.

EASY ASSEMBLY

The choice of materials makes the product very light which makes the handling and installation very easy.



FUNCTION DESCRIPTION

Universal clamp with possibility of clamping a wide range of all common frame legs, round, square, angle etc. Preferably used in combination with ultra beams or Z profiles. Typical for installation of panel antennas, radio links or other common telecom equipment.

MECHANICAL DATA

Clamp profiles: Aluminium, nature anodized 20µm
Fasteners : Acid proof stainless steel

CLAMP MOUNTING RANGE

Frame	Min (in)	Max (in)
Tubes	Ø25 mm (Ø1,0 in)	Ø120 mm (Ø4,7 in)
Square profiles	30 x 30 mm (1,2 x 1,2 in)	90 x 90 mm (3,5 x 3,5 in)
90° Angle	35 x 35 mm (1,4 x 1,4 in)	90 x 90 mm (3,5 x 3,5 in)
60° Angle	35 mm opening (1,4 in opening)	130 mm opening (5,1 in opening)

PRODUCT DIMENSIONS

Length	Width	Height	Weight
245 mm (9,6 in)	180 mm (7,1 in)	75 mm (2,95 in)	2,9 kg (6,4 lb)