

CHAIN BRACKET

P/N: 7685, 7706, 7664, 7707

The Chain Bracket is a fastening system for installation of telecom equipment or other type of equipment on monopoles or round poles.

FLEXIBILITY

The Chain Bracket can be installed on any pole from Ø110 mm up to Ø1070 mm. A wide range of accessory mounts are available for mounting tubes, RRU's, filters etc. even for compensation of inclination when installing on conical monopoles.

QUALITY

All components are made of anodized aluminum and acid proof stainless steel which gives the support excellent corrosion resistance.

EASY ASSEMBLY

Handling and installation is very easy because of its light weight but also thanks to the pre-assembled kit system and the facile tightening process.

FUNCTION DESCRIPTION

The Chain Bracket is an innovative mounting solution for large poles, chimneys etc. with a diameter over Ø110 mm. It comes with a full range of accessories such as brackets for RRU's, antennas, filters etc.

MECHANICAL DATA

Link profiles: Aluminum, nature anodized 20µm
Tensioner profiles: Aluminum, nature anodized 20µm
Link plates and fasteners: Acid proof stainless steel

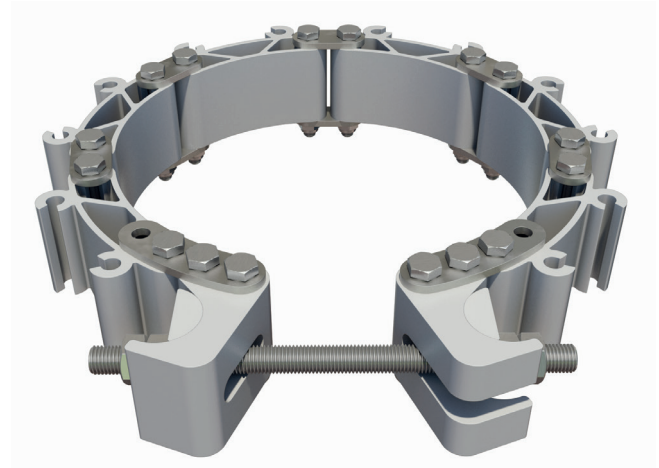
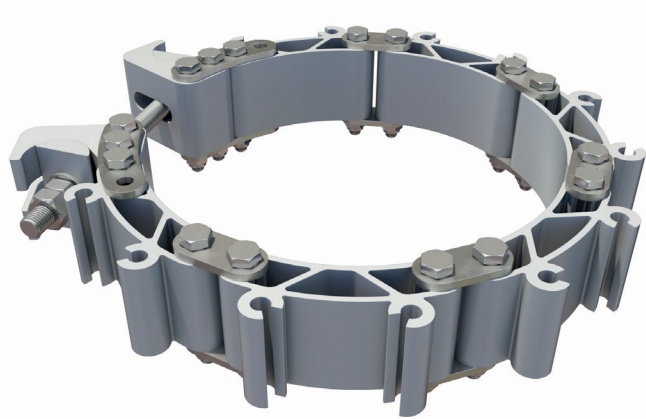
ACCESSORIES

P/N: Product
8160 Chain Bracket Tube Holder
8204 EPDM RUBBER STRIP, running metre,
WxT=52x1,5mm (2,0x0,06 in)

PACKAGE DIMENSIONS

Art.No	Description	Length	Width	Height	Weight
7685	Link Set (1 link)	110 mm (4,3 in)	60 mm (2,4 in)	85 mm (3,3 in)	0,35 kg (0,8 lb)
7706	Basic Set #1 (3 links)	250 mm (10 in)	110 mm (4,3 in)	85 mm (3,3 in)	2,0 kg (4,4 lb)
7664	Basic Set #2 (6 links)	385 mm (15 in)	140 mm (5,5 in)	90 mm (3,6 in)	3,0 kg (6,6 lb)
7707	Basic Set #3 (9 links)	525 mm (21 in)	130 mm (5,1 in)	85 mm (3,3 in)	4,0 kg (8,8 lb)

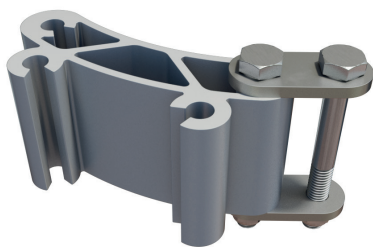
BASIC SETS PRE-ASSEMBLY AT DELIVERY SPEEDS UP INSTALLATION ON SITE



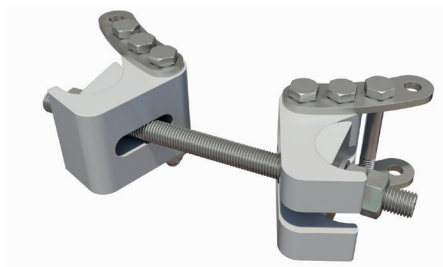
Chain bracket is a fastening system for installation of telecom equipment or other type of equipment on monopoles or round poles.

Chain bracket opens easily on one side to be secured by tighten the M12 screw to tightening torque of 57Nm.

THE MAIN COMPONENTS FOR THE CHAIN BRACKET



LINK

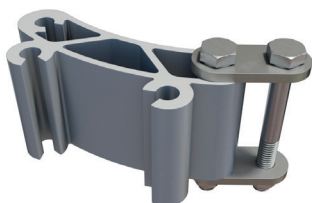


TENSIONER



Chain bracket system consists of two main components, Link and Tensioner. Both are made in extruded aluminum alloy EN AW 6005-T6 which is natural anodized 20µm. The link plates and all fasteners are made of acid proof stainless steel.

BASIC SETS PRE-ASSEMBLY AT DELIVERY SPEEDS UP INSTALLATION ON SITE



LINK SET # ART.NO: 7685
(1 link)



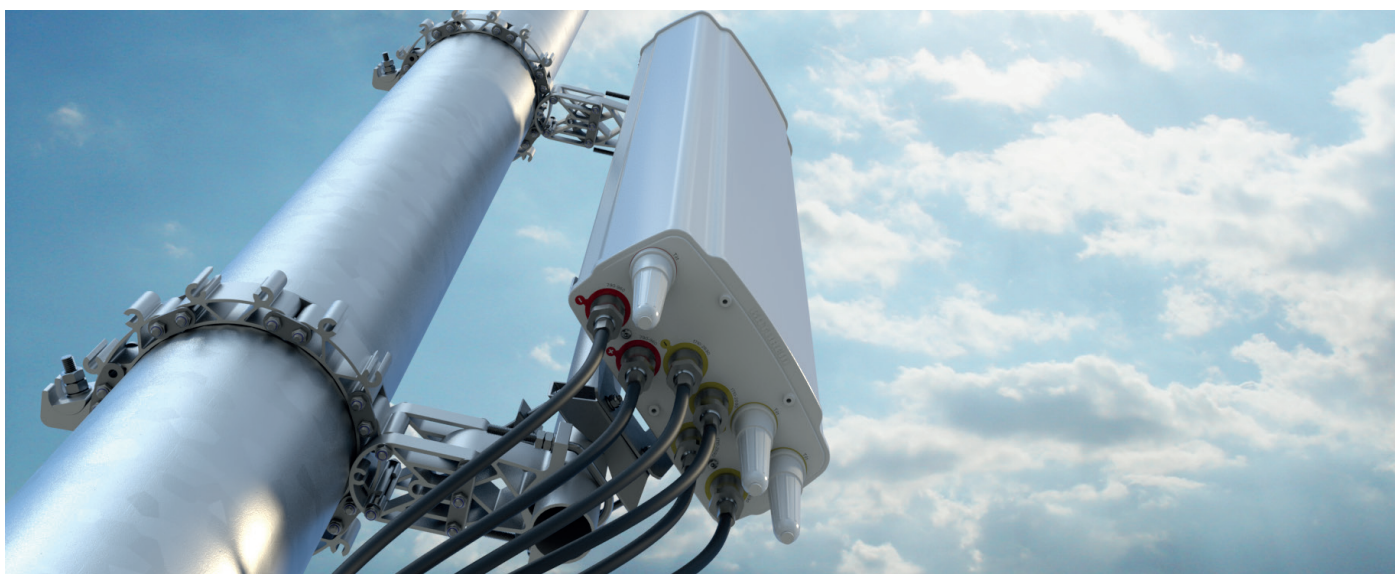
BASIC SET # 1 ART.NO: 7706
(3 links + 1 tensioner)



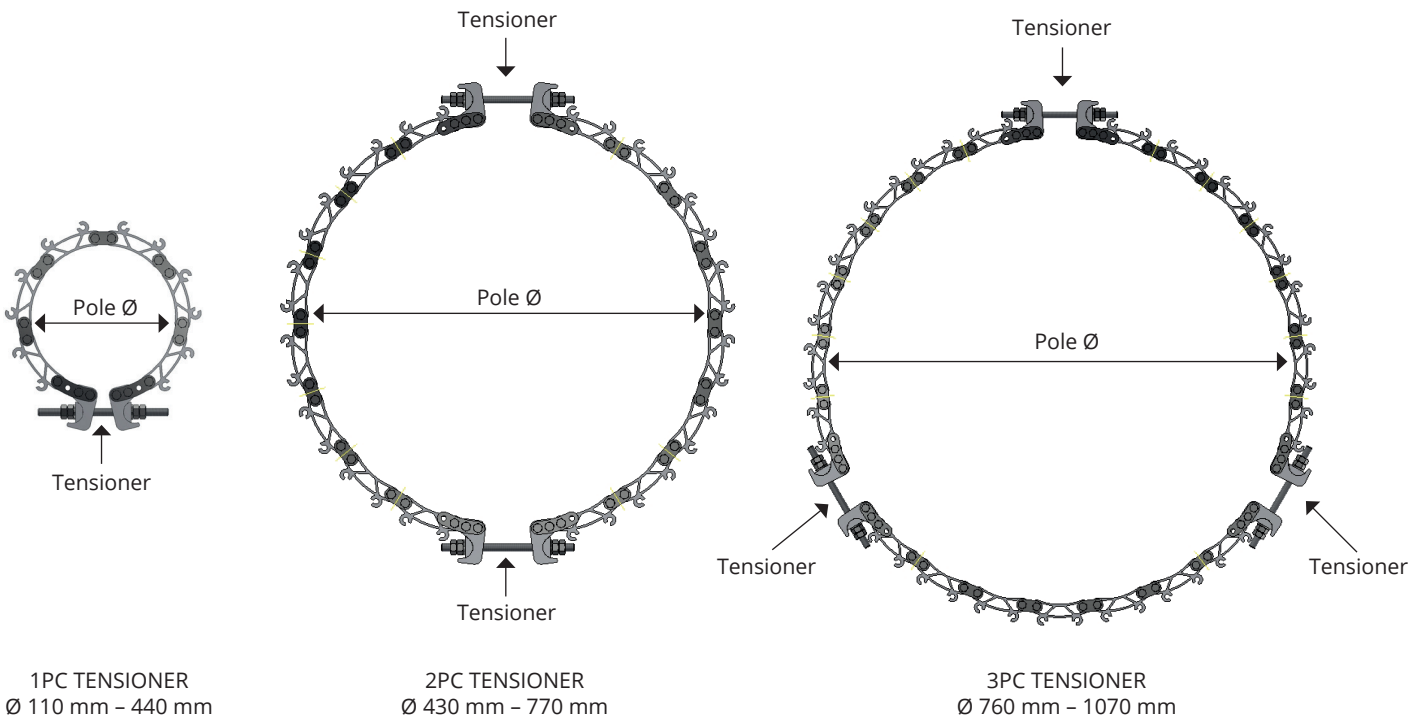
BASIC SET # 2 ART.NO: 7664
(6 links + 1 tensioner)



BASIC SET # 3 ART.NO: 7707
(9 links + 1 tensioner)



NUMBER OF TENSIONERS NEEDED ON DIFFERENT POLE SIZES



POLE DIAMETER RANGE

POLE Ø		(IN)	LINKS	TENSIONER	BASIC SET #1	BASIC SET #2	BASIC SET #3	SINGLE LINK
MM								
Min	Max		Qty	Qty	Art.No: 7706	Art.No: 7664	Art.No: 7707	Art.No: 7685
110	134	(4,3-5,3)	3	1	1	-	-	-
134	169	(5,3-6,6)	4	1	1	-	-	1
169	205	(6,6-8,1)	5	1	1	-	-	2
205	239	(8,1-9,4)	6	1	-	1	-	-
239	273	(9,4-10,7)	7	1	-	1	-	1
273	306	(10,7-12)	8	1	-	1	-	2
306	340	(12-13,4)	9	1	-	-	1	-
340	375	(13,4-14,8)	10	1	-	-	1	1
375	408	(14,8-16)	11	1	-	-	1	2
408	440	(16-17,3)	12	1	-	-	1	3
430	505	(17,3-20)	12	2	-	2	-	-
500	570	(19,7-22,4)	14	2	-	2	-	2
565	640	(22,2-25,2)	16	2	-	1	1	1
635	705	(25-27,8)	18	2	-	-	2	-
700	770	(27,5-30,3)	20	2	-	-	2	2
760	870	(30-34,3)	21	3	1	-	2	-
860	970	(34-38,2)	24	3	-	1	2	-
960	1070	(37,8-42)	27	3	-	-	3	-