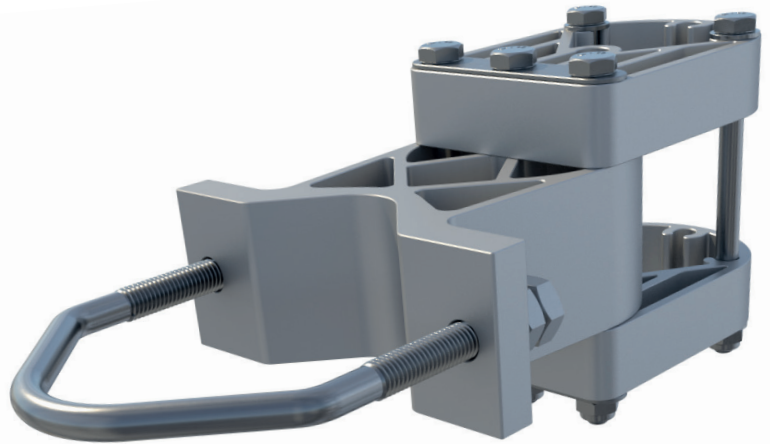


# CHAIN BRACKET TUBE HOLDER

P/N: 8160



The Chain Bracket Tube Holder is designed for installation of Ø60-90 mm mounting tubes in two levels as an accessory to the Chain Bracket system.

## FLEXIBILITY

Together with the Cue Dee Chain Bracket the Tube Holder can be installed on any pole from Ø110 mm up to Ø1070 mm. The Tube Holder is delivered as a set with two holders and is designed with adjustability in both horizontal directions; sideways and radially. This offers unique flexibility when installing and will allow for an exact vertical mounting even on conical monopoles.

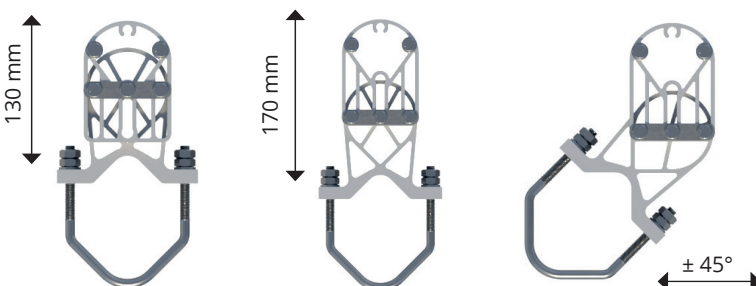
Since Chain Bracket is designed with several profile elements around the pole You can easily install more than one tube around the pole in the same level by just adding Tube Holders.

## QUALITY

All components are made of anodized aluminum and acid proof stainless steel which gives the support excellent corrosion resistance.

## EASY ASSEMBLY

Installation is very easy thanks to its flexible design and that the holder is pre-assembled at delivery.



## FUNCTION DESCRIPTION

Tube holder for Chain Bracket in two levels for installing Ø60-90 mm mounting tubes on any pole or monopole larger than Ø110 mm. Distance between pole and mounting tube is adjustable 130-170 mm.

## MECHANICAL DATA

Profiles: Aluminum, nature anodized 20µm  
Plates: Acid proof stainless steel  
Fasteners: Acid proof stainless steel

## MOUNTING TUBE RANGE

Frame	Min (in)	Max (in)
Tubes	Ø60 mm (Ø2,4 in)	Ø90 mm (Ø3,5 in)

## MAX INCLINATION ADJUSTMENT

Linear: 40 mm (1,5 in)  
Rotational: ± 45°

## PACKAGE DIMENSIONS

Length	Width	Height	Weight
270 mm (10,6 in)	205 mm (8,1 in)	130 mm (5,1 in)	2,9 kg (6,4 lb)

## ACCESSORIES

### CHAIN BRACKET

P/N:	Product
7685	Link Set (1 link)
7706	Basic Set #1 (3 links)
7664	Basic Set #2 (6 links)
7707	Basic Set #3 (9 links)

### MOUNTING TUBES

P/N:	Tube: mm (in)
1216	Ø60 x 3 (2,4 x 0,12)
1217	Ø75 x 3,5 (3,0 x 0,14)
1243	Ø75 x 5 (3,0 x 0,20)
1242	Ø90 x 5 (3,5 x 0,20)



Quality Design