

# SMALL CLAMP 127

P/N: 8970

The small Clamp 127 is a unique clamp that will solve most of the fitting problems on the market. Together with ALUBRA extrusions and fixing angles it is possible to build almost any kind of support structure.

## FLEXIBILITY

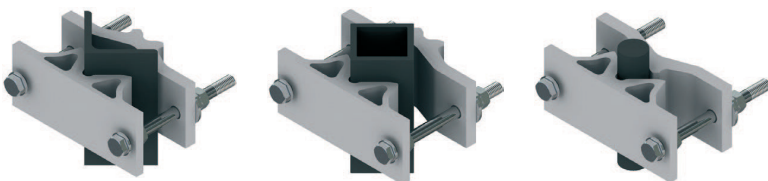
The universal clamp can handle a wide range of all common frame leg designs, round, square, angular, etc.

## QUALITY

All components are made of anodized aluminium and stainless steel which gives the clamp excellent corrosion resistance.

## EASY ASSEMBLY

The choice of materials makes the product very light which makes the handling and installation very easy.



## MECHANICAL DATA

Clamp profiles: Aluminium, Nature anodized 20µm  
Fasteners: Acid proof stainless steel

## CLAMP MOUNTING RANGE

Frame	Min (in)	Max (in)
Tubes	Ø25 mm (Ø1,0 in)	Ø127 mm (Ø3,5 in)
Square profiles	35 x 35 mm (1,0 x 1,0 in)	90 x 90 mm (3,3 x 3,3 in)
90° Angle	35 x 35 mm (1,4 x 1,4 in)	90 x 90 mm (3,5 x 3,5 in)
60° Angle	40 mm opening (1,6 in in opening)	100 mm opening (4,0 in opening)

## PRODUCT DIMENSIONS

Length	Width	Height	Weight
168 mm (6,6 in)	210 mm (8,27 in)	70 mm (2,76 in)	1,6 kg (3,53 lb)

\*Small clamp 127 fits together with Alubra 75 and Alubra 100